

**KalingaStone**<sup>®</sup>  
TERRAZZO, MARBLE & QUARTZ



**CLASSIC MARBLE COMPANY PVT. LTD.**

**Head Office:**

15, Bhandup Village Road, Subhash Nagar, Bhandup (W), Mumbai - 400 078,  
Maharashtra, India. Tel : +91-22 4140 4140 | Fax : +91-22 4140 4141

**Kalingastone Plant:**

Survey No. 286, Village Naroli, Near Naroli RTO Check Post, Silvassa - 396 230,  
U.T. of Dadra & Nagar Haveli, India. Tel : +91-260 351 6000. Fax: +91-260 351 6001,  
260 351 6002, 260 351 6003

**Email:** [info@kalingastone.com](mailto:info@kalingastone.com) | [www.kalingastone.com](http://www.kalingastone.com)

Scan to download App

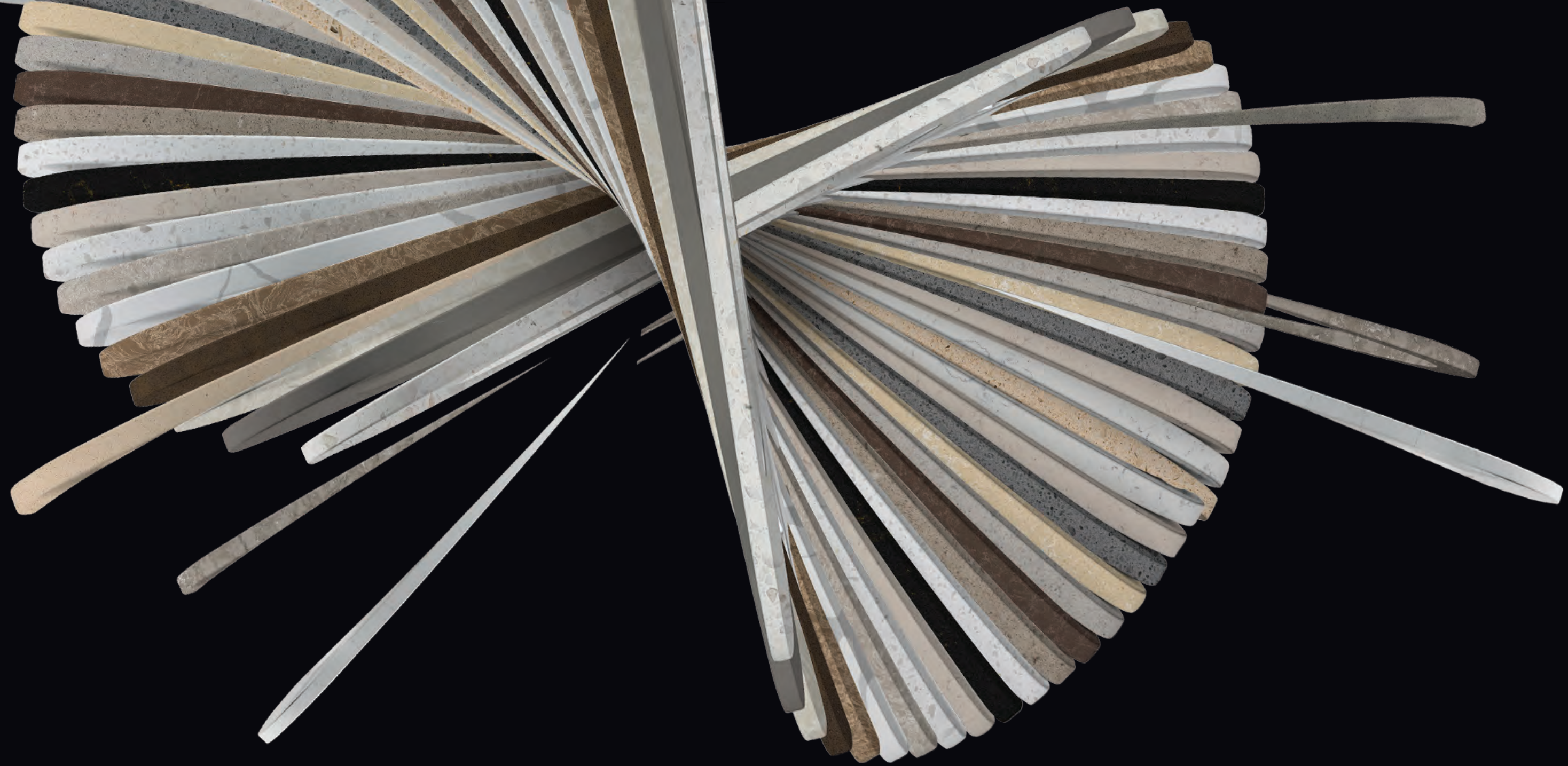


05.2022

# SOARING CREATIVITY

QUARTZ COLLECTION

**Note:** Representation of colours may vary from the actual product, please view the actual product prior to selection.



## Where Progressive Thoughts Bloom Into New Age Work Of Art

Imagination is freedom from boundaries and restrictions. It's about experiencing break-free flowing ideas that are pathbreaking. To partner your such vision is Kalingastone Quartz. Made exquisitely for you break free and stun the world.

## QUARTZ COLLECTION

Engineered Quartz is being used more than ever before for interior decoration in residences as well as commercial establishments. Its hardness, low absorption nature and stain resistance properties make it an ideal solution for covering public utility areas and commercial application.



## Versatility of Application

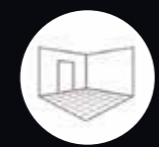
The sophisticated nature of the product makes it suitable for all modern living settings.

## WHY KALINGASTONE QUARTZ?

- **Food Safe** Kalingastone Quartz is certified by NSF International as a safe and secure surface for food
- **Resistant to stains and scratch** A lower absorption rate of <0.05% than even Natural Granite, makes it immune to stain
- **Homogeneous** A benchmarking consistency in the shade, thickness and texture is ensured
- **Resistant to heat** Remains indifferent to heat
- **Requires minimal maintenance** The low absorption, sturdy, stain-resistant surface makes it easy to clean and hygienic to use.



KITCHEN COUNTER TOPS



FLOORING



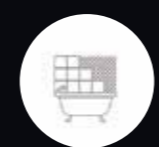
WALL CLADDING



VANITY COUNTER



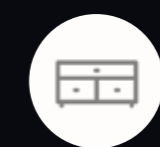
WINDOW SILL



BATHROOM FLOORING AND WALL CLADDING



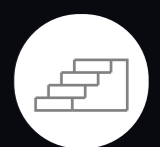
LIFT LOBBY CLADDING



FURNITURE (counter)



DOOR JAMBS



STAIRCASE

QUARTZ COLLECTION

GROUP - 1



WALL: BIANCO CRISTALLO | FLOORING: CREMA SCURO

GROUP - 1



BIANCO CRISTALLO



CREMA SCURO

QUARTZ COLLECTION

# GROUP - 1A



TABLE TOP: BIANCO NEVE

GROUP - 1A



BIANCO NEVE

GROUP - 2



GROUP - 2



BEIGE DIAMANTE



SANDY DIAMANTE



DESERT BROWN

GROUP - 2

MOCCA CRÉME

BEIGE TUSCANY

MOCCA DIAMANTE

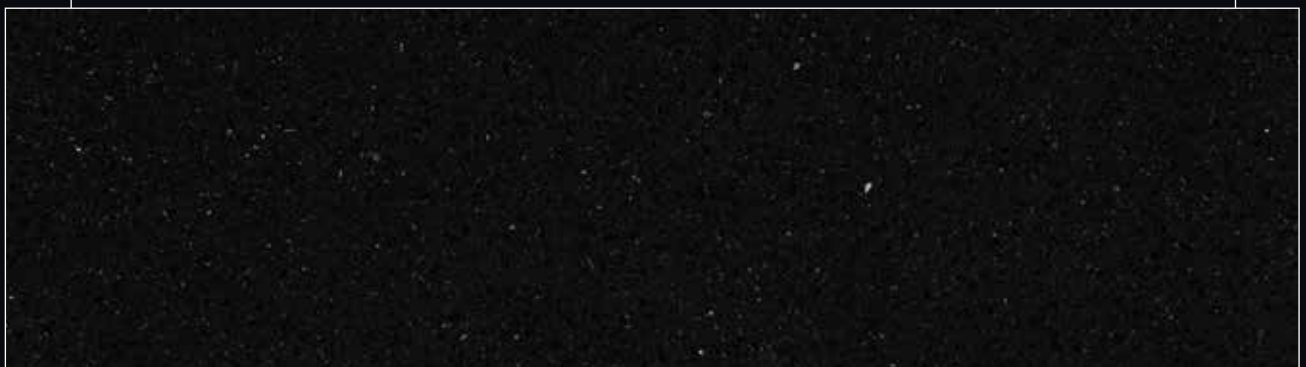
GROUP - 2



CREMA VERONA



GRIGIO DIAMANTE



NERO DIAMANTE

GROUP - 3



GROUP - 3



VETRO BIANCO



BIANCO CLASSIC



BIANCO DIAMANTE



CLASSIC BEIGE

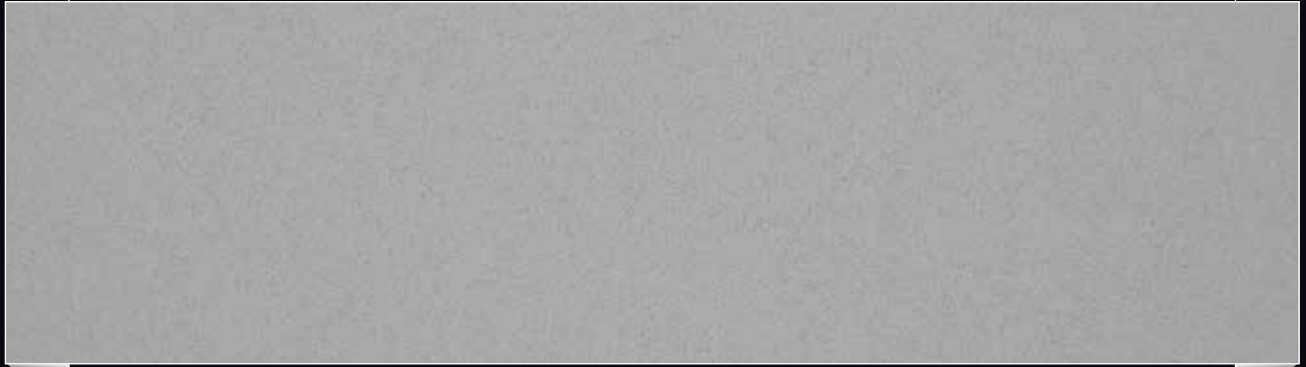
QUARTZ COLLECTION

GROUP - 3



TABLE TOP: ASH GREY | FLOORING: CONCRETE

GROUP - 3



CONCRETE



CHANDAN



ASH GREY



MILANO

GROUP - 3



GROUP - 3



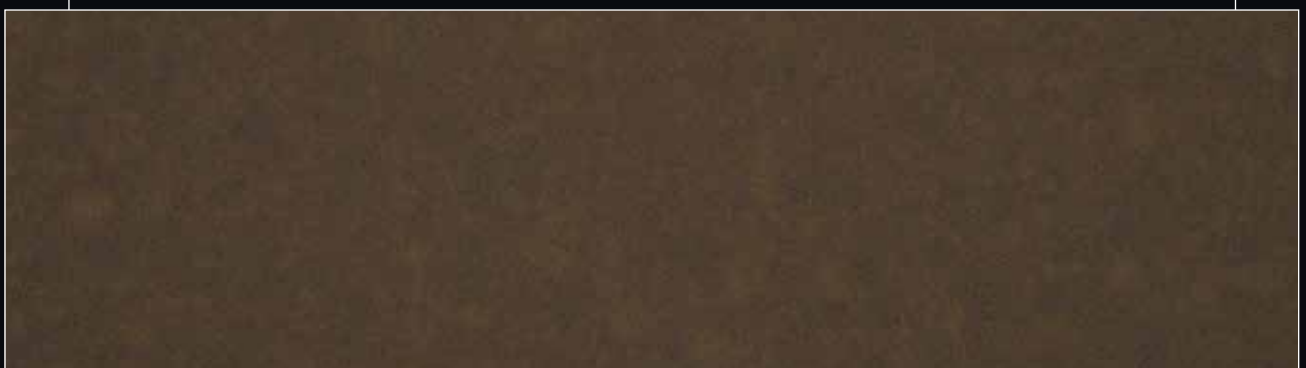
REPEN



CEMENT



GRIGIO LONDRA



USH

QUARTZ COLLECTION

GROUP - 3



COUNTER: PEPPERCORN WHITE & METROPOLITAN

GROUP - 3



SILVER GREY



METROPOLITAN



NERO CLASSIC



PEPPERCORN WHITE

GROUP - 4



GROUP - 4



CREMA VENATO EXTRA



NOAH



GREY FJORDO

GROUP - 4



BIANCO CARRARA



GRIS VENATO

GROUP - 5



GROUP - 5



BERMINGHAM



NISLEY



CREMA GOLD

GROUP - 5

NEW EXTRA WHITE

BIANCO GIOIA

GROUP - 6



GROUP - 6



BIANCO RIVER



BIANCO SUPERIORE



BORA

GROUP - 6



TUNDRA



BLACK CANVAS

GROUP - 7



NUVOLATO WHITE



SMOKY STATUARIO



BIANCO IBIZA



BIANCO VENATINO

GROUP - 7



NEW BIANCO ALASKA



FJORD



GRAPHITE GREY



PIETRA GREY

FINISHES



DISTRESS



LEATHER

FINISHES



HONED



NALICO

# ENGINEERED MARVEL



The Classic Marble Company (CMC) is proud to be recognised as India's largest and foremost importer in the architectural world of stones. Since its inception in 1994, it has been the only company to supply more than 150 million square feet of imported marble in the country. CMC is also the biggest supplier of natural marble and granite along with other precious stones such as travertine, onyx, limestone and a host of exotic stones, which are procured from some of the finest reserves in the world.

ISO 9001: 2015, ISO 14001: 2015, 45001-2018 Certified Company, CMC is headquartered in Mumbai and operates exclusive showrooms in Mumbai and Silvassa, Characterised by value-oriented service and professional expertise, CMC is a reputed single source for over 500 exquisite stones from over 45 different countries that include Italy, Turkey, Spain, Greece, Brazil, USA, Sweden, Norway, Mexico among others.

To keep up with changing trends, Kalingastone a brand producing engineered stones namely Marble, Quartz and Terrazzo was launched, which today is a dominant player in the segment. Shortly after, CMC launched a Kalinga Porcelain Surfaces, a niche range of ultra-thin, large-sized porcelain slabs. The range of slim slabs meet the highest standards in quality and express magnificence in every creation.

EXPLORE OVER **150**  
**POSSIBILITIES**



The artistic brilliance of Kalingastone, an engineered Marble, Quartz and Terrazzo range, has helped bring visions to life across globe. The design possibilities are limitless with an ethereal collection of over 150 designs and shades. Over the years, the brand has made its global presence prominent in 66 countries through its unmatched quality and its adherence to International standards.

Being awarded the 'Indian Power Brand' in the Marble and Stone category and 'Best Innovative Products' by Indian Institute of Architects, Mumbai in 2010 stands as a testimony to the superior artistry and pedigree of Kalingastone.

ENGINEERED

BY CUTTING-EDGE TECHNOLOGY



The newest KalingaStone Quartz line is created using state-of-the-art technology featuring a fully automated production line, starting from feeding the raw material to the stacking of the finished slabs. The production facility, with an installed capacity of 35,000sq.mt per month is capable of producing Quartz slabs in the 'superjumbo' dimensions of 3300 x 2000mm.

ENGINEERED WITH THE BEST

INTEREST OF ENVIRONMENT AT HEART



CMC was, has, and will always continue to do everything in its potential to ensure a healthier planet. What makes CMC a highly environmentally conscious company is its Go Green initiatives, optimum use of natural resources, the utilization of more than 90% of re-cycled materials and the continuous re-use of water from various different processes.

# GLOBAL PROJECTS

**BRAZIL** • Body Tech • **Sao Paulo** • Lock Properties • Guatemy Shopping Mall  
• **BAHRAIN** • Banander Hotel • Carling Wood Retirement Community  
• **CANADA** • May Fair Hotel • Royce Building • **CHINA** • Peking University  
• **Beijing** • Guomad Shopping Mall • **COLOMBIA** • Beach Tower -  
Cartagena • **QATAR** • **Doha** • North Gate -South Hall • Twin Towers - Pull  
Man Hotel • Pearl Cinema • **U.A.E.** • **Dubai** • Armani Hotel- Burj Khalifa  
• Intl. Fujairah Hotel • IL Villaggio Shopping Mall • Landmark Group • Shobha  
Heartland • Al Khoory Africom Hotel • **Abu Dhabi** • NMC Hospital • **ECUADOR**  
• El Tower Quito • Avianca Lounge • **HONG KONG** • Hongkong Bank • The  
Langham Dallan • Eaton Smart Hotel • Shk Properites- Residential • Ifc, Tko  
Building • Happy Valley Residential Project • Sai Wan Terrace • Kowloon Pek  
Project • C R Land Mix City Project • Ma On Shan Shopping Arcade • Mtr  
Project • **KENYA** • Diamond Plaza • Kisumu Hotel • Vienna Court Project  
• **KUWAIT** • Boubyan Bank Project • Debbenham Shops • Booth Shops  
• **LEBANON** • Beirut Garden • **NEW ZEALAND** • Quay Hotel • **NORTH  
AMERICA** • Quilto Tower • Lounge Air Canada • **SINGAPORE** • Land Mark  
Metro Station • Boureno Motors • Residences And Offices In Landmark  
Towers • Bellewood • Ck Tang Shopping Center • No. 360 Orchard Road  
• Inflora Project • The Maisons @ Braddell Park • White Haven • The Quinn @  
Bartley Road • Guslong Project • The Citron Residences-Sharon • North  
Point Shopping Mall • Vivocity Project • **SRI LANKA** • 110 Parliament Road  
• President House • Union Residency • Blue Mountain Project • Brown Beach  
Hotel • Jaic Hiltone • Laugf • Navy Project • Negombo Beach Resort  
• Rainbow Business Centre • Atlantis Residential Project • Weerawila Hotel  
• Hilton Residences • Amantara Peace Heaven Tanglee Resort • **U.K.** • Pond  
Place / Narborough Road Projects • Tesco Supermarkets • Royal Wharf  
• Chelsea High End Residences • South Kensington Private Residential  
Project • **U.S.A** • Rittenhouse Hill Apartment Project • Hudson Hotel NY  
• Radisson Hotel • Bal Habor Residences Miami • **UGANDA** • Acacia Place  
• Dfcu Bank • **TURKEY** • Crown Hotel • Surmeli Hotel • **GABON** • Marina  
Gate • **ZIMBABWAE** • Chamunika Building Harare

# DOMESTIC PROJECTS

**DELHI** • Park Inn • Ambience Public School • Bharti Commercial Tower • TV Today Corporate Office • Delhi International Airport • National Press Centre • ONGC - Corporate Office • Vangard Housing • Great India Place Mall • Central Square Mall • Safdarjung Hospital • **DAMAN** • Thunder Bird Resort • **GUJARAT** • **Ahmedabad** • The Fern • Holiday Inn Express • TransStadia Football Stadium • Novotel • **Gandhinagar** • GIFT City • **Vadodara** • Knowledge City • **GOA** • CIPLA • Holiday Inn Resort • **JAMMU AND KASHMIR** • **Srinagar** • Lalit Hotel • **KARNATAKA** • **Bangalore** • RMZ Mall • Virtuous Mall • **Coimbatore** • Akshaya Homes • **KERALA** • **Cochin** • Hotel Crown Plaza • **MAHARASHTRA** • **Mumbai** • Orchid Hotels • INOX Leisure Ltd • State Bank of India • CIDCO Exhibition Centre • Bharat Diamond Bourse • Phoenix - Infocity • Indiabulls Financial Centre • Essel School • Reliance Industries Ltd • Mumbai International Airport • CRISIL • Financial Technologies • Bank of India • Income Tax Building • Bombay Hospital Trust • Seven Hills Hospital • Sir H. N. Reliance Foundation Hospital (Hurkisondas Hospital) • St. Andrews School • Oberoi Mall • Korum Mall • **Navi Mumbai** • Navi Mumbai Municipal Corporation Building • MGM Hospital • **Pune** • Meridien Hotel • Marriott Courtyard • **TAMIL NADU** • **Chennai** • Olympia Tech Park • Cognizant Technologies • Palm Grove Beach Hotels • **Nagercoil** • Pothys Textile Showroom • **PONDICHERRY** • SPI Cinemas • **PUNJAB & HARYANA** • PVR (Elante) • **Gurgoan** • HCL • Google office • **RAJASTHAN** • **Jaipur** • Manipal Hospital • **Udaipur** • Hotel Park Plaza • **TELANGANA** • **Hyderabad** • Salarjung Museum • Infosys • Waverock • **UTTAR PRADESH** • **Noida** • NIIT • NCR • Havells India Ltd • **Lucknow** • Halwasia Mall • **UTTRAKHAND** • Times Square Mall • **WEST BENGAL** • **Kolkatta** • Srijan IT Park • J.W. Marriott • NIBMG • **ALL INDIA** • Nexa Maruti Showroom • More than 500 Residential & Commercial Projects

## TECHNICAL SPECIFICATIONS - QUARTZ

Test Performed	Test Standards	Results
App. Density kg/dm <sup>3</sup>	ASTM C 97	> 2.1
	EN14617-1	> 2.1
Water Absorption %	ASTM C 97	< 0.05
	EN14617-1	< 0.05
Modulus of Rupture (Mpa) (Dry/Wet)	ASTM C 99	55 - 65
Dimensional Stability	EN14617-12	Class A
Flexural Strength (Mpa)	ASTM C 880	40 - 60 (Dry/Wet)
	EN14617-2	50 - 60
Impact Resistance (joule)	EN14617-9	5 - 14.5 joule
Compressive Strength (Mpa)	ASTM C 170	150 - 250 (Dry/Wet)
	EN14617-15	170 - 240
Frost Resistance	DIN 52104	Complies with Standard
Surface Hardness (Moh's Scale)	EN 101	6.0 - 7.0
Abrasion Resistance	ASTM C 241	Min 25.0
	ASTM C 1243-93	Volume of Chord : V= 60.0 - 107.9 mm <sup>3</sup>
	EN 14617-4	Chord Length = 21.0 - 22.5 mm
Stain Resistance	ANSI Z 124.6	Pass
Wear & Cleanability	ANSI Z 124.6	Pass
Cigarette Test	ANSI Z 124.6	Pass
Resistance to Acids	ASTM C 650	Not Affected
Chemical Resistance	ANSI Z 124.6	Pass
	EN14617-10	Class C4
Boiling Water Resistance	NEMA LD3-3.5	Pass / No effect
High Temperature Resistance	NEMA LD3-3.6	Pass / No effect
Linear Thermal Expansion (30 °C - 100 °C) °C <sup>-1</sup>	ASTM C 372-94	3.0 - 5.0 X10 <sup>-5</sup> per °C
	EN14617-11	13 - 26.0 X 10 <sup>-5</sup>
Radiation	GB 6566-2010	Complies with requirement of standards
Fire Classification	EN 13501-1	Wall Cladding: B-S1-d0, Flooring & Stairs: B-fl-S1
Surface Burning	ASTM E 84	Class A
Slip Resistance	EN 14231	Wet: 13-21 SRV , Dry: 43-53 SRV
Thermal Shock Resistance	EN14617-6	No Visual defects after 20 cycle, Loss in Mass = 0.04% - 0.07%, Loss in flexural strength= 6.0% - 9.5%
Freeze & Thaw Resistance	ASTM C 1026	No damage after 20 freeze-thaw cycle
	EN14617-5	No defect after 25 freeze-thaw cycles.
Glossiness Reflection	%	55 - 70
Surface Slip Resistance HONED 400	DIN 51130	R9
Thermal Conductivity	EN 12664	0.435 - 0.485 W/(m.K)
Static Co-efficient of Friction	ASTM C 1028	Dry: 0.8 , Wet: 0.6

Quartz Slab Sizes: 315 X 145 cm / 325 X 165 cm / 330 x 200 cm

**CERTIFICATIONS:**

